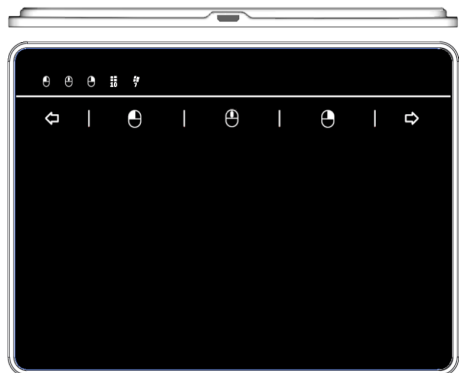




## MANO-603U

### Windows Precision Touchpad User Manual



for Windows 10/NT/ 7 or above

### About this product

This product supports Windows 10/7 /NT system, integrates Microsoft Mouse and Microsoft Precision Touchpad features in this unit, and is a revolutionary pointer device that allows users to operate mouse and touchpad functions simultaneously.

### Product Characteristics

- . Supports Windows 10, 7, NT system
- . Ultra-thin metal housing, easy to operate and carry
- . Avoid wrist joint injuries caused by mouse operation
- . All of the mouse-key features are available
- . Mouse key-status indicators are supported
- . Supports Windows mouse and touchpad functions
- . Supports Windows 10 the gesture function settings
- . Supports Windows 10 the pointer accuracy settings
- . Supports Windows 10 the cursor-speed settings
- . Supports Windows 10 the X-Y-wheel gesture settings
- . Supports Windows 10 the fast-rolling function settings

### Dimensions



### Indicators

- Light-on indicates the mouse button is pressed
- Light-on indicates touchpad is connected to the Windows 10
- Light-on indicates touchpad is connected to the Windows 7

### Mouse Keys



### Descriptions

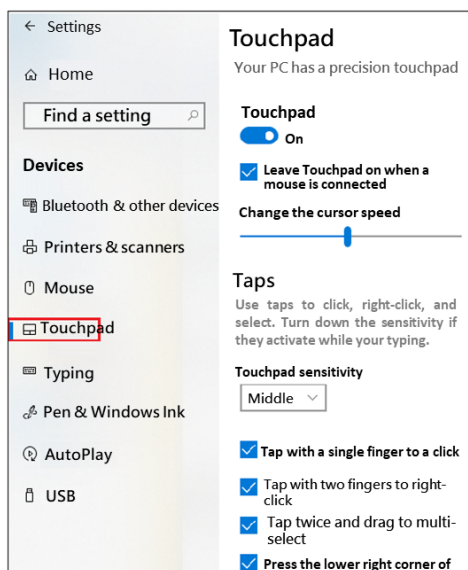
- . A list with 5 different touch-keys is above the touch area
- . Touch keys can only be operated by one-finger touch-click
- . When you operate the cursor or gesture function, all touch-key functions are temporarily disabled
- . When repeatedly click a touch mouse-key, the key will exchange to the pressed or the released state
- . When a mouse key is pressed, the corresponding light lights up
- . Mouse keys can be released when operating the click or gesture
- . Once device is connected to Windows 10, indicator lights up
- . Once device is connected to Windows 7, indicator lights up
- . In Windows 10, the touchpad provides Windows 10 gestures
- . In Windows 7/NT, touchpad provides its built-in gestures

The Windows 10 provides a setting page for user to re-define the touchpad functions, including: the gesture function, the pointer speed, the wheel's rolling-direction and speed, the touchpad sensitivity... and the others of related function.

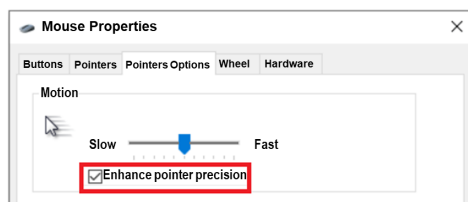
The first time you use this touchpad, it is recommended for you go to the Windows 10 touchpad settings page to learn the default gesture functions and instructions. In this settings page, you can change the cursor speed to match your operating habits. About others feature settings please refer to this touchpad settings page.

### Touchpad Setting Page

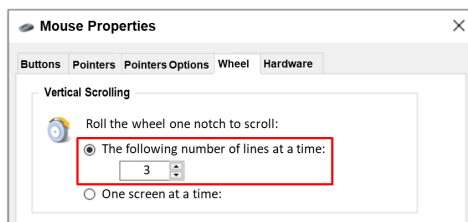
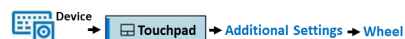
Follow below steps to launch the touchpad settings page.



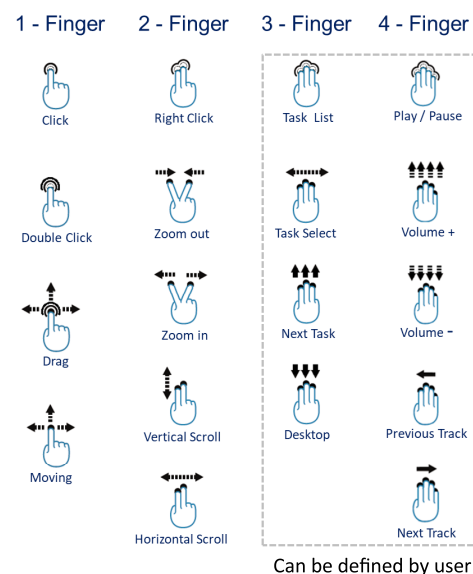
Follow below steps to select the touchpad's pointer accuracy



Follow below steps to adjust the touchpad's wheel-speed



### Windows 10 Gesture List



### Windows 7/NT Gesture

